

# A Senior Community with everything you always wanted



## All of the amenities at **AFFORDABLE RENTS**

Many renters aged 55+ don't realize that they could qualify to live at The Birches.

Our affordable rents are designed to provide beautiful quality apartments that meet the needs of 55+ renters living on a limited income.

Call our office today for a personal tour and find out if you may qualify for a 1 or 2 bedroom apartment at The Birches.

Please call our office  
for details  
907-376-9512

The Birches at Haley Hills is located in Wasilla Alaska

Wasilla offers the best of Alaska. A thriving crossroads with a booming economy, this rapidly growing city is the heart of a diverse and dynamic region. Wasilla is the commercial and retail center for the Matanuska-Susitna Borough in South-central Alaska. (The area, considered Alaska's breadbasket because it is the state's major agricultural region, is often called "the Mat-Su Valley" or simply "Mat-Su.") .

Wasilla is the home of the world renowned Iditarod Trail Sled Dog Race and the Tesoro Iron-Dog 2000, the world's longest snowmobile race. Fishing, swimming, boating, hiking, and biking are popular activities during summer's long daylight hours, and mountains, lakes, streams, wetlands, tundra, and boreal forests are within easy reach.



Find your home in Wasilla at  
The Birches Apartments.



235 E Kalli Circle  
Wasilla Alaska 99654  
**907-376-9512**

Rent Affordable  
1 & 2 Bedroom Apartments

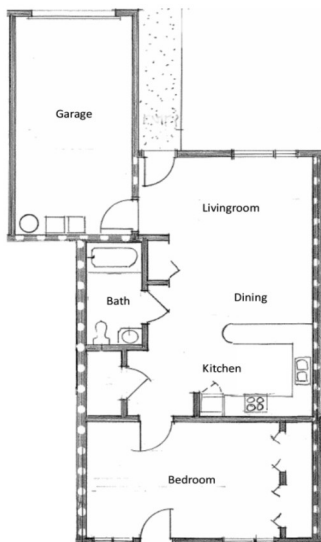
A Somerset Pacific LLC Managed Property



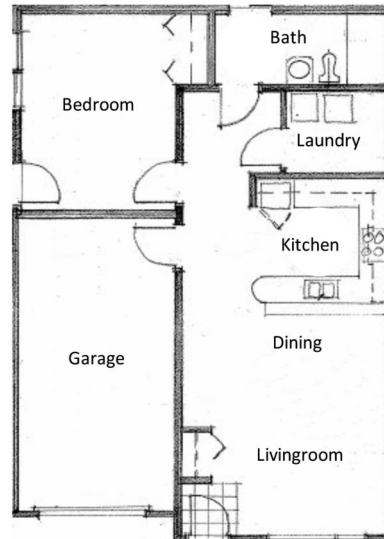
ONE BEDROOM/1 BATH 642 SGFT



ONE BEDROOM/1 BATH 738 SGFT



ONE BEDROOM/1 BATH 642 SGFT



#### Apartment Amenities

- Fully Equipped Kitchen
- Energy Star Appliances
- Washer & Dryer Hook Ups
- Balcony/Patio
- No Charge for Water Service
- No Charge to Trash Service

#### Community Amenities

- Beautifully Landscaped
- Picnic/BBQ Areas
- Community Activity Room
- Laundry Facility
- Handicap Accessible
- On-site Management
- On-site Maintenance Staff

TWO BEDROOM/1 BATH 738 SQFT



TWO BEDROOM/1 BATH 742 SQFT

